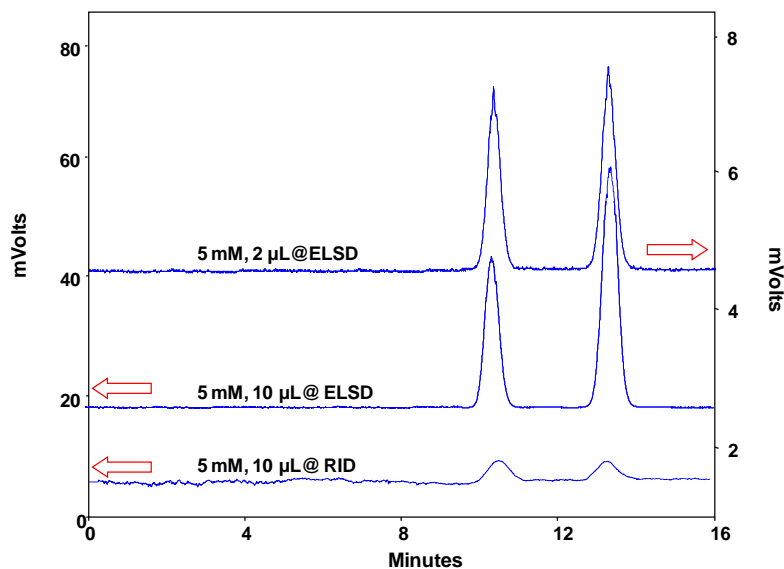




Analysis of Sugar on Carbomix[®] Ca-NP10 (10 μ m, 8%, 7.8x300 mm) - Comparison of the two detectors: ELSD and RID



Column:	Carbomix [®] Ca-NP10 (10 μ m, 8% crosslinking, 7.8x300 mm)	
	1. ELSD	2. RID
Mobile Phase:	H ₂ O	H ₂ O
Flow Rate:	0.6 mL/min	0.6 mL/min
Temperature:	85 °C	85 °C
Detection:	ELSD (drift tube temp.: 65 °C; gas flow rate: 2.0 L/min)	RI (temp.: 30 °C)
Injection Volume:	10 μ L	10 μ L
Samples:	Glucose and Fructose, 5 mM	Glucose and Fructose, 5 mM

Keywords: Carbohydrate, Carbomix, calcium form, glucose, fructose, ELSD, RI