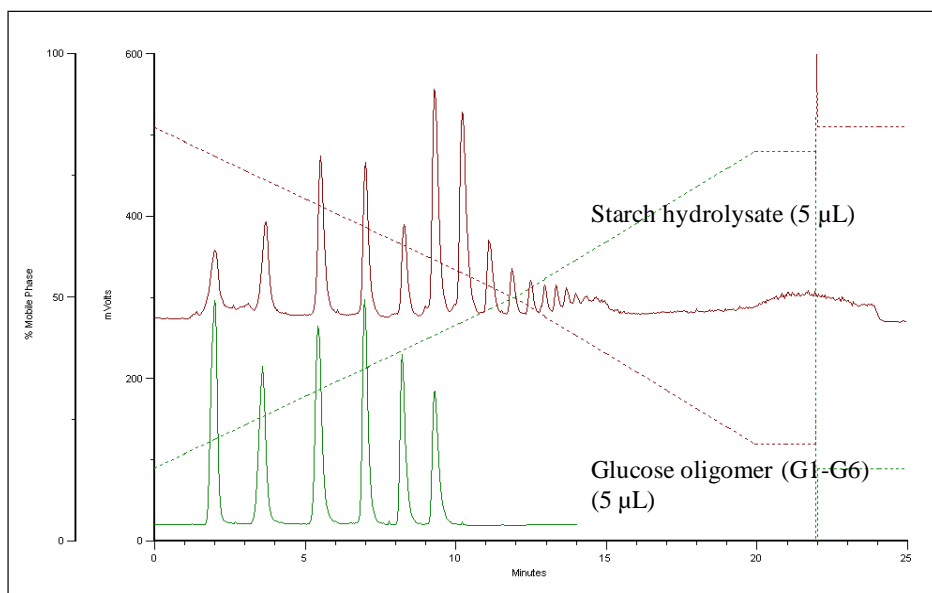




Separation of Carbohydrates on Proteomix[®] SAX-NP5 (5 μ m, 4.6x150 mm)



Column: Proteomix[®] SAX-NP5 (5 μ m, 4.6x150mm)
Mobile Phases: (A) 0.05% (25% NH₄OH) in CH₃CN; (B) 0.05% (25% NH₄OH) in H₂O
Gradient: 15-80%B (20 min)
Flow Rate: 0.7 mL/min
Temperature: 35 °C
Detection: ELSD
Samples: Corn starch hydrolysate; glucose oligomer (G1 to G6)
(Courtesy of Miyako Kawakatsu, M&S Instruments Inc.)

Keywords: Ion-exchange, Proteomix, strong anion exchange, carbohydrate, corn starch hydrolysate, glucose oligomer, volatile buffer