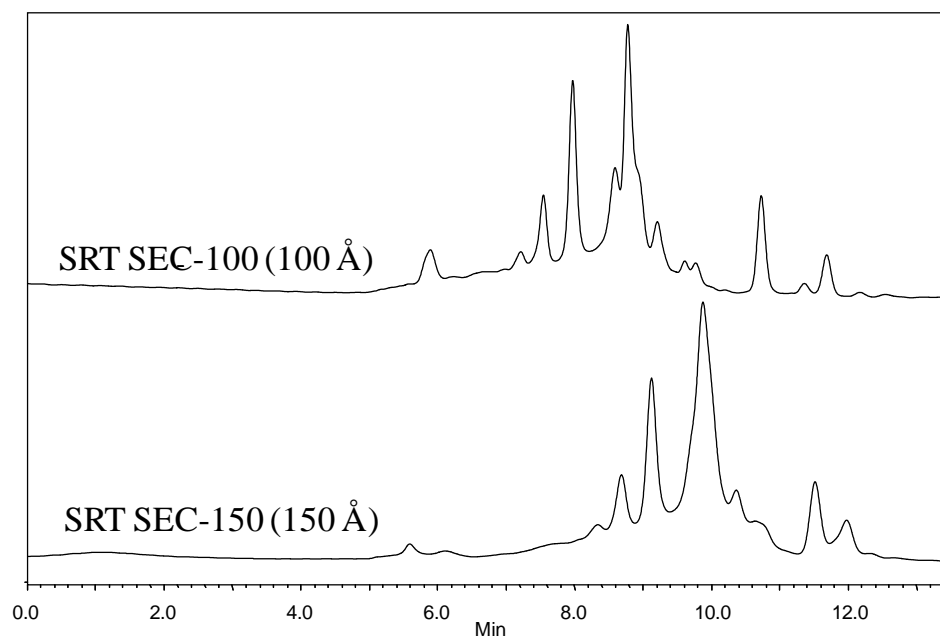




Separation of Low MW Polysaccharides on SRT[®]



Column: SRT[®] (5 μ m, 4.6 x 300 mm)
Mobile Phase: 0.15 M phosphate buffer, pH 7
Flow Rate: 0.35 mL/min
Detection: UV 214 nm
Sample: Achyranthes bidentata polysaccharides (ABPS) from plant root extract (MW < 10,000)
Injection Volume: 10 μ L

Keywords: size exclusion, SRT, polysaccharides