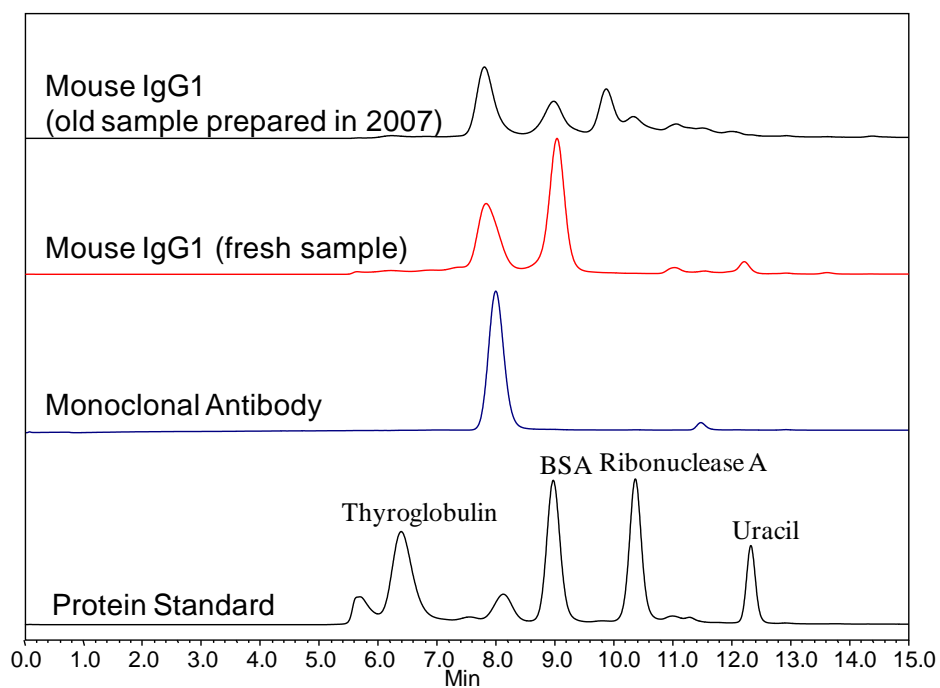




Separation of Different Biological Molecules on SRT[®]-300



Column: SRT[®] SEC-300 (5 μ m, 300 \AA , 7.8 x 300 mm)
Mobile Phase: 150 mM phosphate buffer, pH 7.0
Flow Rate: 1.0 mL/min
Detection: UV 214 nm
Concentration: 1 mg/mL
Injection Volume: 10 μ L

Keywords: size exclusion, SRT, SRT 300, mouse IgG, monoclonal antibody