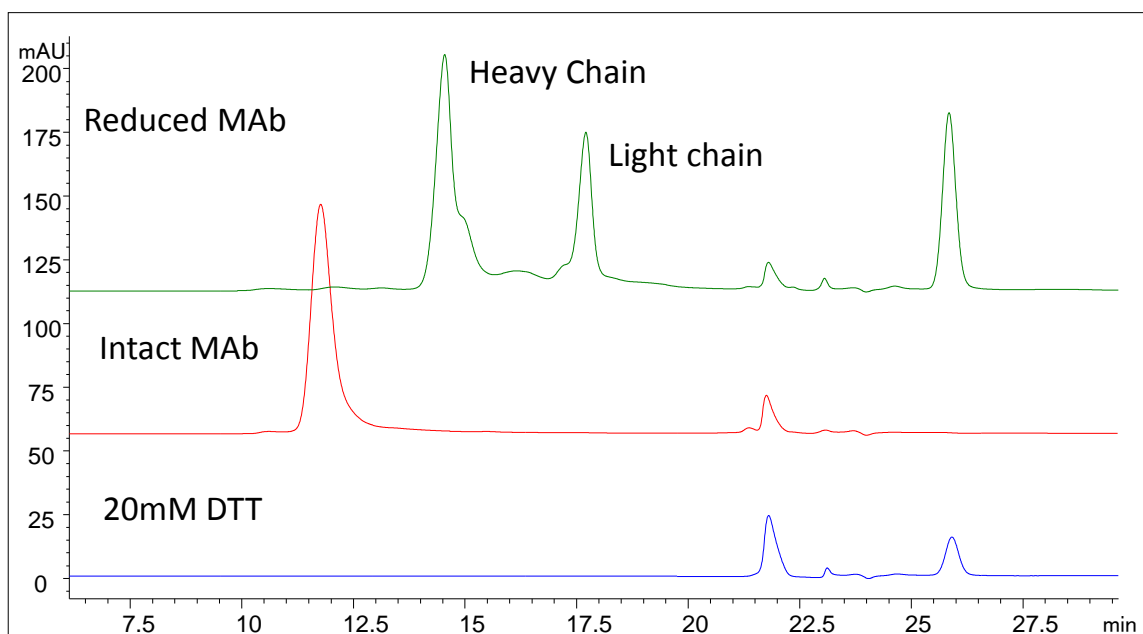




## Monoclonal Antibody Heavy and Light Chain Separation on Zenix™ (7.8 x 300 mm)



<b>Column:</b>	Zenix™ -300 7830
<b>Mobile phase:</b>	0.1% TFA, 0.1% formic acid and 20% acetonitrile
<b>Flow:</b>	0.5mL/min
<b>Detection:</b>	UV 280nm
<b>Injection volume:</b>	20 µL
<b>Sample:</b>	Reduced monoclonal antibody (1 mg/mL) with 20 mM DTT

Keywords: Size exclusion, Zenix, proteins, pore size, monoclonal antibody, reduced monoclonal antibody, heavy chain, light chain, volatile mobile phase